

# BURLINGTON BRANCH



**May 2023**

**ALL BRANCHES CLOSED MAY 29TH  
FOR MEMORIAL DAY**

All Ages

**Art in the Afternoon**—Tuesdays@ 3:30pm (May 2, 9, 16, 23, 30)  
Ages 10yr and older

**Pen Pals Registration**—Sign up to be paired with a Pen Pal from  
Madison Public library or Fort Scott Public  
(Parent Permission Required)

Children

**Family Stoytime**—Mondays@ 11:15am (May 1, 8, 15, 22)

**Lapsit Storytime**—Thursdays@ 10:00am (birth-18mo)  
(May 4, 11, 18, 25)

**Music And Movement**—Thursdays@ 11:15am  
(May 4, 11, 18, 25)

**Summer Lunch**—Monday-Friday starting May 22nd. 12-1:00pm  
Children up to 18, eat at library or Grab & Go

Adult

**Make & Take Craft**—Monday 15th@ 10:00am  
(register by 12th)

**Let's Make Something**—See @BurlingtonBranch on  
Facebook for information

**Spicy Book Club**—Monday 8th@5:30 pm at Cilantros (you are  
responsible for your own food and drink)

**Book Discussion**—Monday 22nd @ 6:30pm  
*North of Normal by Cea Sunrise Person*

**A  
C  
T  
I  
V  
I  
T  
I  
E  
S**

## Hours

Mon - Thurs 9am - 8pm

Friday 9am - 5pm

Saturday 9am - 3pm

## For More Information

620-364-5333

[www.cclibraryks.org](http://www.cclibraryks.org)

## **ART IN THE AFTERNOON**

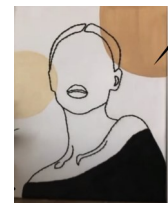
**Tuesdays  
3:30pm**

For 10yrs and older

May 2nd  
City Scape



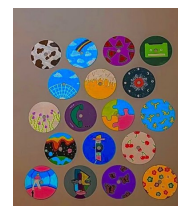
May 9th  
Needle Art



May 16th  
Water  
Color  
Hour  
Glass



May 23rd  
Painting  
CDs



### **Ice Cream Social**

Summer Reading  
Kick-Off

May 19th @ 1:30pm

All Ages Welcome!

Eat some ice cream  
and learn how you  
can sign up and  
earn prizes for  
reading this  
summer!



### **Summer Lunch**

Monday-Friday

12:00pm-1:00pm

Starting May 22nd

Children up to 18 years  
old can eat at the library  
or grab a lunch to go.



### **Make & Take Craft**

May 15th @ 10:00 am

Newspaper Baskets

Register by May 12th



# Meetings in May

## **Sewing Friends**

12:30—2:00 p.m. Tuesday, May 2nd

1st Tuesday of each month (special date & time in Dec.)

## **Caregivers' Support Group Coffee Chat**

12:30—1:30 p.m., Thursday, May 11th

2nd Thursday of each month

## **Cancer Support Group**

7:00—8:00 p.m., Thursday, May 25th

Last Thursday of each month (except for holidays)

**ALL MEETINGS SUBJECT TO  
CHANGE OR CANCELLATION**